

National Assessment and Accreditation Council (NAAC)

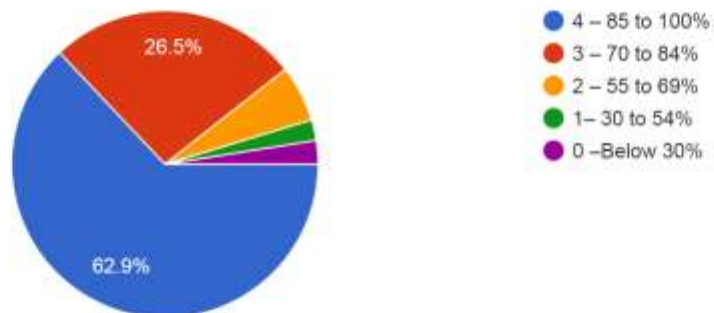
Student Satisfaction Survey

Key Indicator - 2.7.1

Under Criterion II of Teaching – Learning and Evaluation

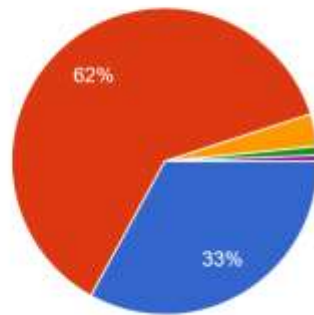
1. How much of the syllabus was covered in the class?

321 responses



2. How well did the teachers prepare for the classes?

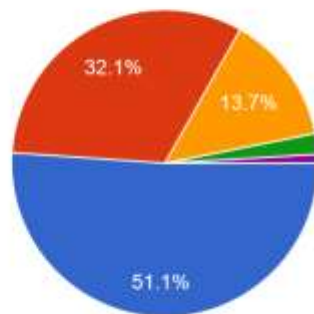
321 responses



- 4 - Thoroughly
- 3 - Satisfactorily
- 2 - Poorly
- 1 - Indifferently
- 0 - Won't teach at all

3. How well were the teachers able to communicate?

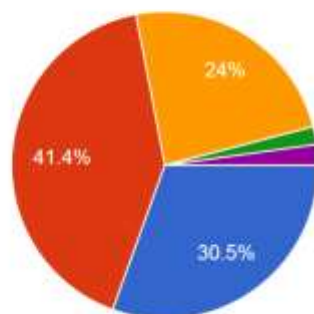
321 responses



- 4 - Always effective
- 3 - Sometimes effective
- 2 - Just satisfactorily
- 1 - Generally ineffective
- 0 - Very poor communication

4. The teacher's approach to teaching can best be described as

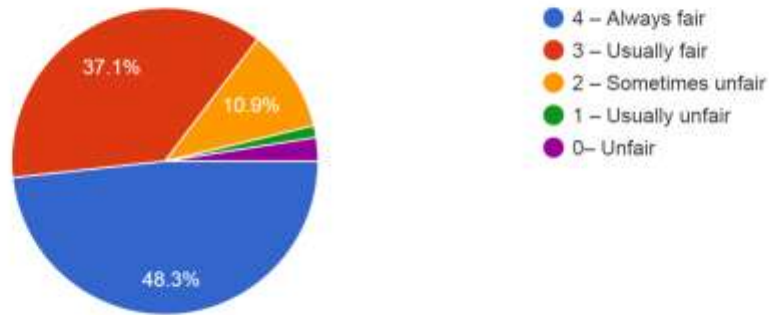
321 responses



- 4 - Excellent
- 3 - Very good
- 2 - Good
- 1 - Fair
- 0 - Poor

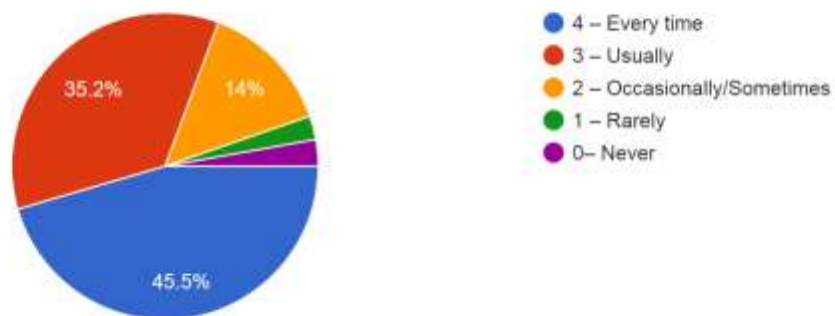
5. Fairness of the internal evaluation process by the teachers.

321 responses



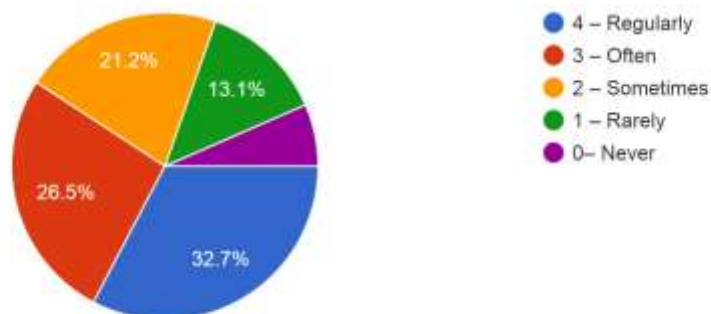
6. Was your performance in assignments discussed with you?

321 responses



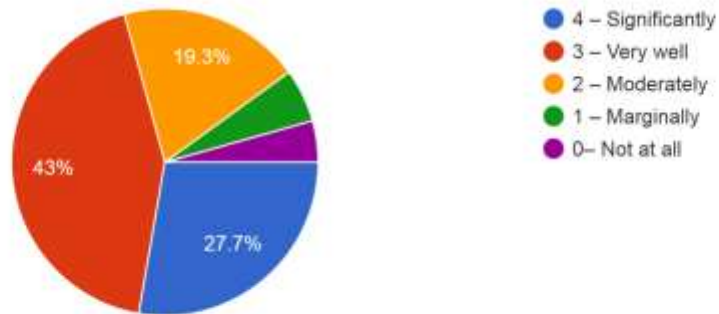
7. The institute takes active interest in promoting internship, student exchange, field visit opportunities for students

321 responses



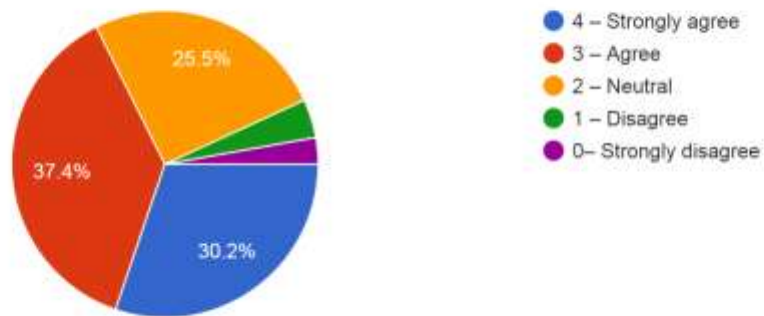
8. The teaching and mentoring process in your institution facilitates you in cognitive, social and emotional growth.

321 responses



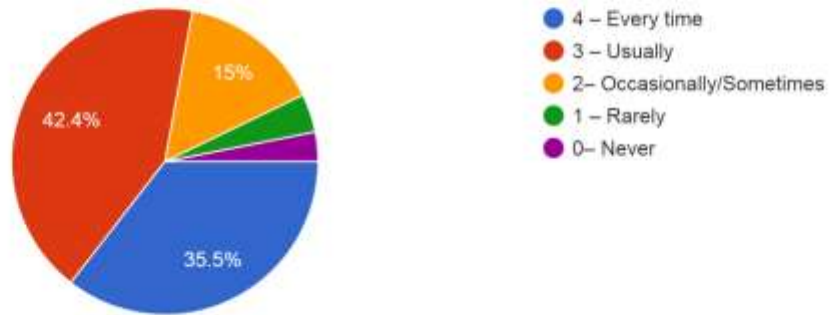
9. The institution provides multiple opportunities to learn and grow.

321 responses



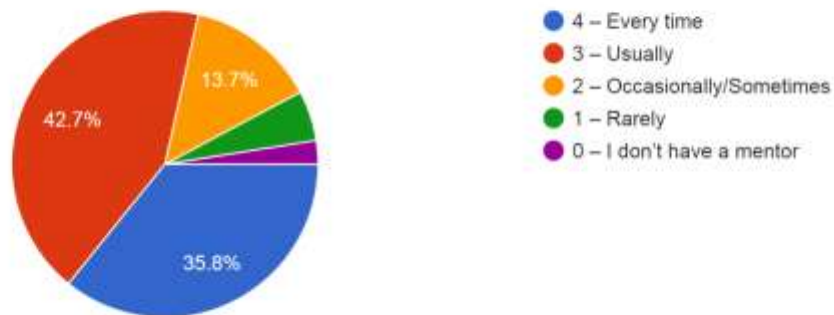
10. Teachers inform you about your expected competencies, course outcomes and programme outcomes.

321 responses



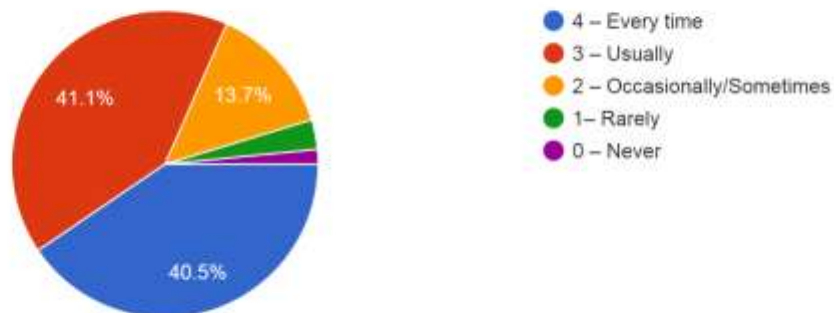
11. Your mentor does a necessary follow-up with an assigned task to you

321 responses



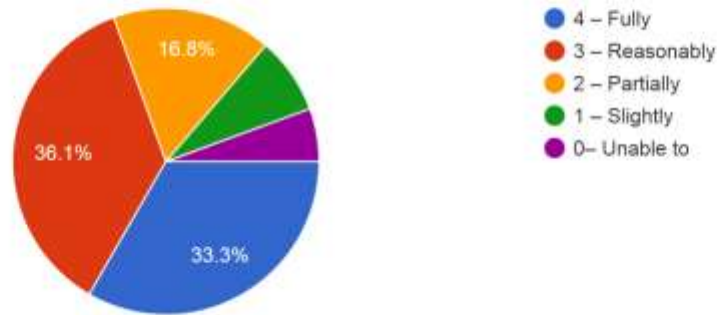
12. The teachers illustrate the concepts through examples and applications.

321 responses



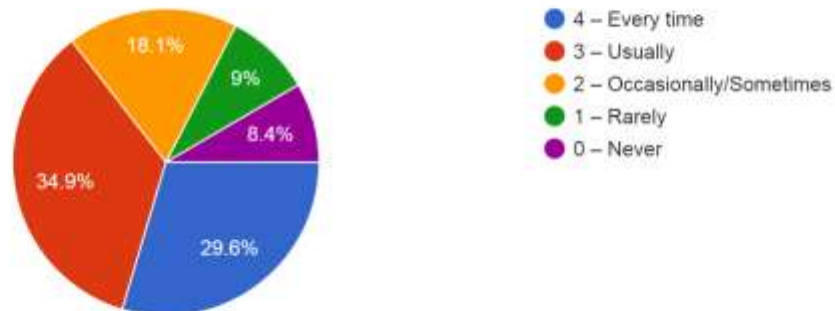
13. The teachers identify your strengths and encourage you with providing right level of challenges.

321 responses



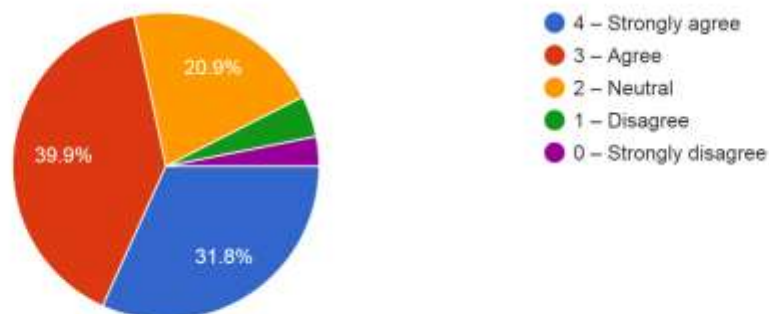
14. Teachers are able to identify your weaknesses and help you to overcome them

321 responses



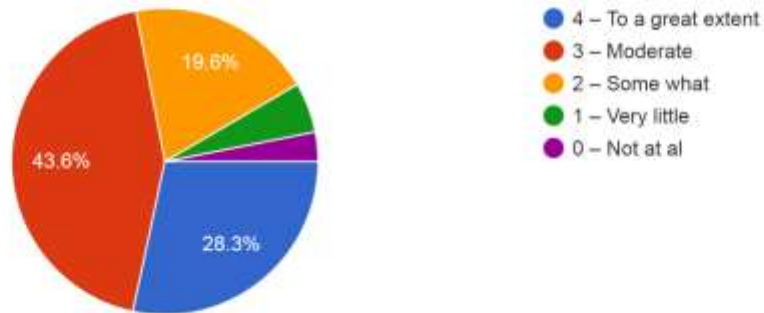
15. The institution makes effort to engage students in the monitoring, review and continuous quality improvement of the teaching learning process.

321 responses



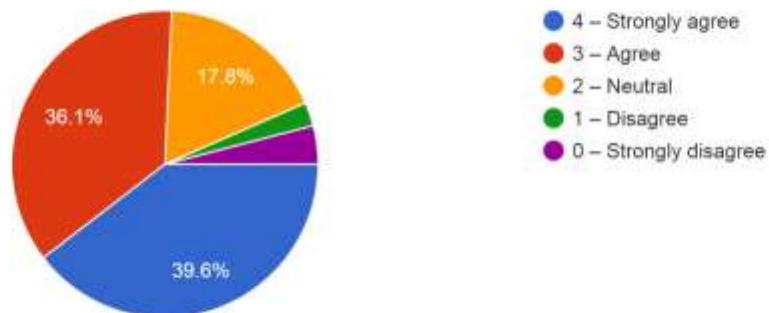
16. The institute/ teachers use student centric methods, such as experiential learning, participative learning and problem solving methodologies for enhancing learning experiences.

321 responses



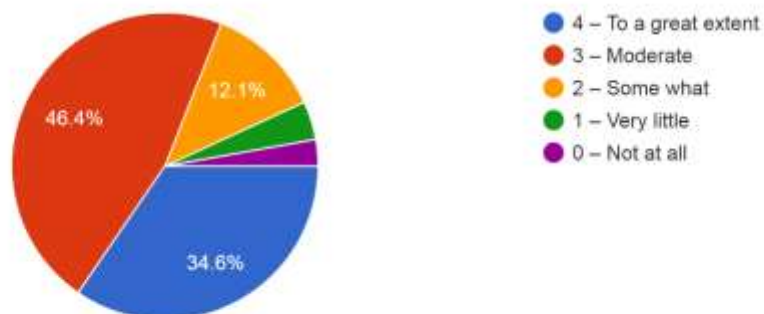
17. Teachers encourage you to participate in extracurricular activities.

321 responses



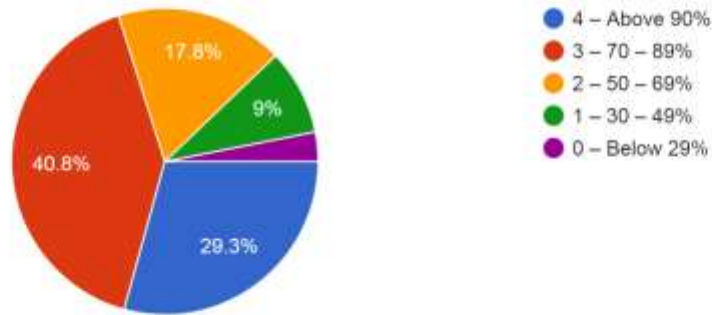
18. Efforts are made by the institute/ teachers to inculcate soft skills, life skills and employability skills to make you ready for the world of work.

321 responses



19. What percentage of teachers use ICT tools such as LCD projector, Multimedia, etc. while teaching.

321 responses



20. The overall quality of teaching-learning process in your institute is very good.

321 responses

