



TECHNOCRATS



USHA  RAMA

RESEARCH & DEVELOPMENT

Approved By AICTE , New Delhi. An ISO 9001-2008 Certified Organization
Near Gannavaram, Telaprolu, Krishna District, Andhra Pradesh.

FOREWORD

As Mr. Rama Bramham Sunkara, the Chairman of Usharama college of Engineering & Technology said “Special Team is one of the innovations which is effectively designed and successfully implementing for the bright future of innovative minds”

Dr. Rajesh, Principal of Usharama stated - “Special Team is called as the fixer for the students by minimizing the broad gap between the current Industry and Academics”

Mr. Anil, Secretary of UshaRama shares his experience as –
“The Special Team working passion resembles the IT Environment without any boundaries”

Mr. Arun Lanka, Director of Usharama leaves a note by saying “Special Team is a manufacturing unit which provides quality Engineers of tomorrow”

ABOUT US



Usha Rama College of Engineering and Technology, established by Usha Rama Edu-cational Academy, with the aim of nculcating quality education to students and produce young teichnocrats having good knowledge. The college is approved by AICTE and affiliated to ffITU-Kakinada. It is sponsored by Chicago based Multi Million Dollar Advansoft group

Advansoft Group made an extensive study of the functioning of premier educational institutions in India and abroad and had an extensive consultation with Industry, academi-cians and scholars, the efforts of which finally culminated in laying the foundation for the college in 2008. Even before the college commenced its functioning an elaborate plan was drawn up for acclimatizing and absorbing the students predominantly hailing from a rural background, into an environment demanding learning of frontier technologies.

URCE has within a short span of time launches knowledge rehabilitation hub i.e; Technocrats of UshaRama that has changed the meaning of Engi-neering. This book has its roots developed from Jan '15. The WeekEnd Project (WEP) is a most awaiting programme for the special team who has been nominated, based on their interests and skills. The main goal of WEP plan is to develop a project, at the weekend were the related training held for the whole week programme creates a platform for the students to impress, inspire and initiate towards the technologies, no matter "who you are?" and "what you do?" we are here to change the academic knowledge to Industrial.

As per the "Book of Abstracts" is considered, the set of Industrial and real-time project abstracts are produced and developed by the students of Special Team with tremendous intelligence and hard work These abstracts are very close to the market which makes them ready for facing the challenges in today's Information Technology.

OUR PLACEMENTS





Technical Manager

Muni Mahesh
B.E., M.S(P.M.P)
CSE, IT & ECE
Linux, Big Data, DB,
Java, and BI

Sr. Tech Coordinator

Samba Siva Rao
M.tech
CSE ,IT & ECM
Web apps,JS, DB, python





Venkat. Jaya Krishna Namburu
Head & Operating System Consultant
in.linkedin.com/namburu26
jayakrishna@usharama.in
+91 898-553-1995



Pavan Kumar Yelamanchili
Programing Consultant
pavankumar@usharama.in
+91 8499901012



K.N.V.Teja
Solution Consultant
teja@usharama.in
+91 7893910077



G.H.S.KSandeep
Delivery Planning Consultant
sandeep@usharama.in
+91 7382153489



Sai Pavan Teja
Matlab/Open CV Consultant
pavanteja@usharama.in
+91 9500419902



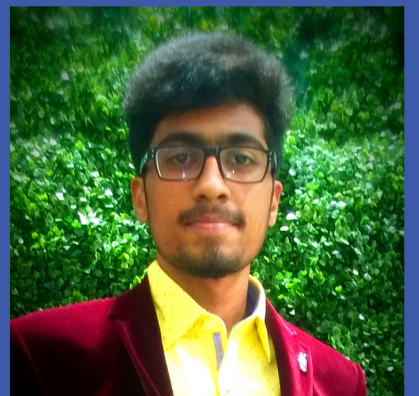
Y.Yasaswini
Aurdino Consultant
yasaswini@usharama.in
+91 9581139462



Azeez Patan
Comsol Consultant
azeez@usharama.in
+91 8500277485



Arshia Afrouz
Statistics Consultant
arshia@usharama.in
+91 8985832269

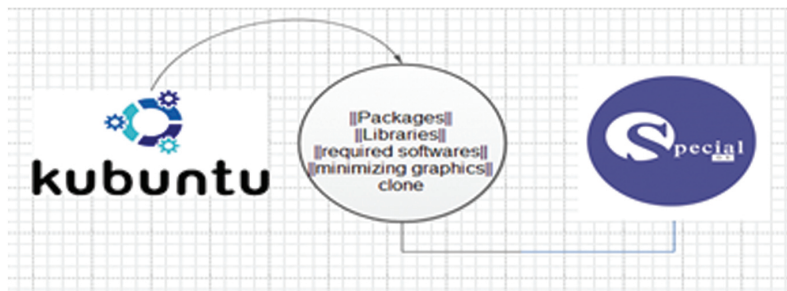


B.Surya Teja
Business Consultant
surya@usharama.in
+91 8500537145

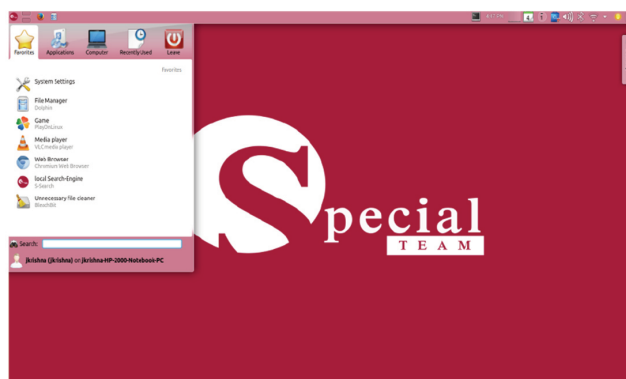
Problem Definition: Information Technology acquired the global work and customized according to the end-user or business user needs. As of today's start up generation needs more customizations for better performance and throughput. So, the underlying base of all software's relies on CPU scheduler as per the instructions from Operating system. This paper includes an Operating System design for corporate usage by following the set of methodologies for specific set of applications. This results in quick processing of applications as per the priority.

Environment : Kubuntu, Debian, Remastersys

Design :



Custom OS for Start-up :



For more details:

Team Name > Assassin's

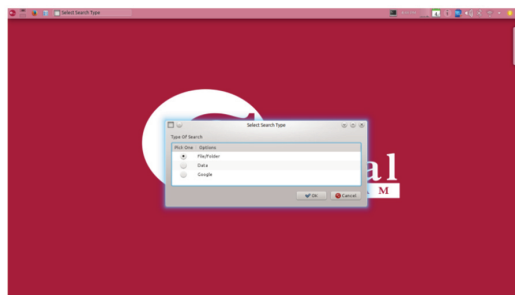
Email > jayakrishna@usharama.in

Contact > +91-8985531995

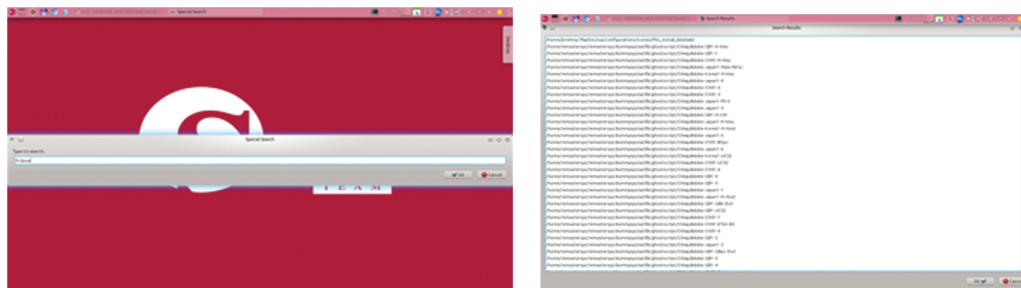
Problem Definition : Search engine optimizations are the process of fetching the results of required data from a bunch. These search engines has different ways of considerations like local search, video search and image search. But, the existing search engines in local picks if any file or a folder matches to the text requested. This paper involves in dealing with the search engine for the local machine by considering the depth search analysis of data or sub-data inside a file too.

Environment : tools used, OS, technique implemented, libraries

Design :



Custom OS for Start-up :



For more details:

Team Name > Searchnerds

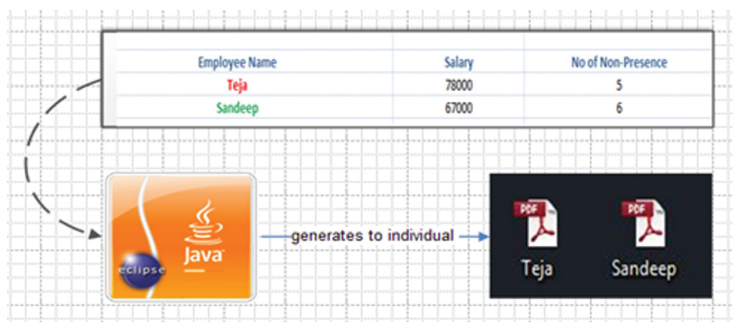
Email > pavankumar@usharama.in

Contact > +91-8499901012

Problem Definition : An excel sheet has a wide range of cells with 'n' no. of columns which specifically known as a dataset. An excel is one of the primary statistician tools to solve or calculate a certain business equation. As a part of conversions is considered, the excel data can be converted or formatted to PDF, JPG, JSON etc. But, converting an individual cell or a record as a PDF is a challenge for the users. So, this product lifts the challenge and proceeds with an individual record by following the formula and delivers as a PDF file with the same name of the record considered.

Environment: eclipse, Linux, java , apache poi, itext

Design :



Generated Pdf's as per the employee :processed days

Name	Salary Per Day	Days Present	Salary
Sandeep	967.74193548387 1	31.0	30000.0

For more details:

Team Name > Solutionators

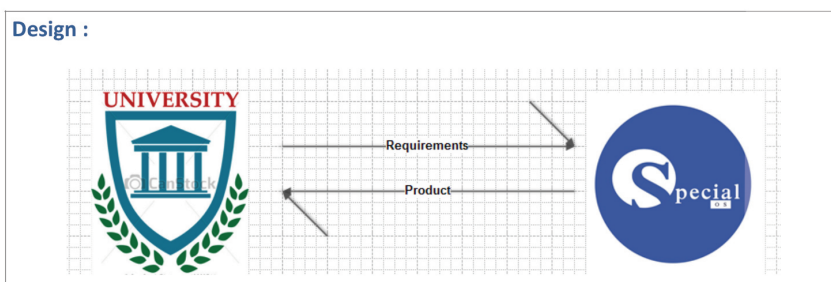
Email > teja@usharama.in

Contact > +91-7893910077

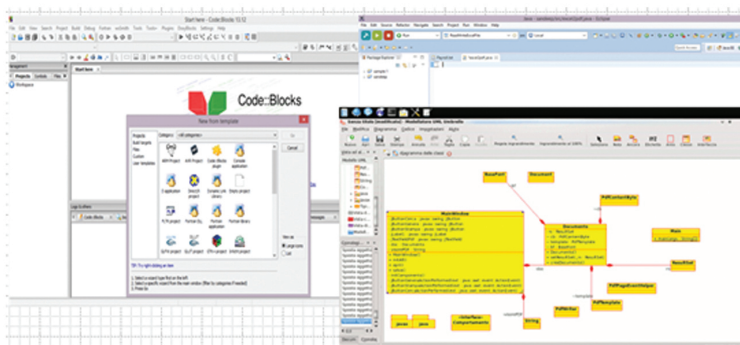
Problem Definition : The Vision to work with IT Industry needs some upgrades from the Academic level. Choosing the right software at academic stage results, the best way to dive into the industry. Fixing an accurate software / OS which serves the multiple requirements is one of the best challenges for academic growth and initiate a start-up company. A fixed form of analysis need to be undertaken to fill the bridge between the two divergent. The role of delivering manager is to think, analyze and innovate the next generation of software usage.

Environment: LINUX (SPEC-OS), ECLIPSE (Java, Python, Ruby, Groovy), CODE BLOCKS (C and C++), SUDOBITS (UML Tools for Designing).

Design :



Custom OS for Start-up :



For more details:

Team Name > TechnoFoulders

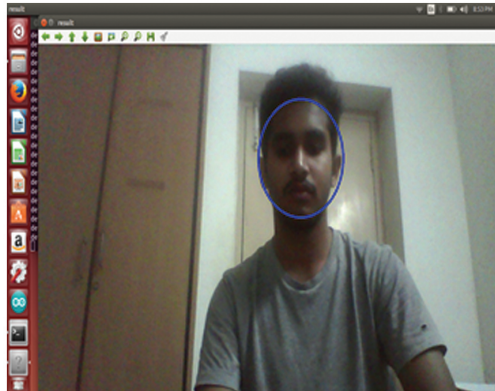
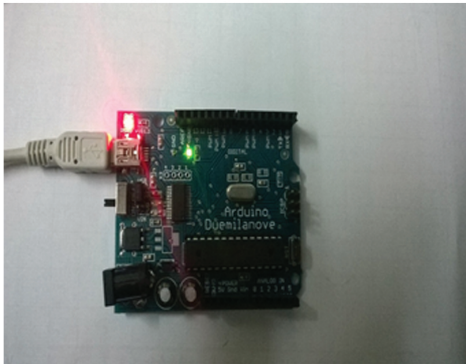
Email > sandeep@usharama.in

Contact > +91-7382153489

Problem Definition: As we are at the generation of handy mobilization and smart functioning, the residential and home automations also entered into the same era of improvised productivity. The centralized organizer understanding the instructions needs to undertake the total responsibility of the home appliances. The Arduino environment itself works as the centralized organizer by in-taking the user face detections through webcam and openCV as the programming interface. The paper focuses mainly on automatic home functioning with the presence of user itself.

Environment: OpenCV, Linux, Arduino, harscades algorithm

Arduino As a Communicator for face detecting



For more details:

Team Name > CVians

Email > pavanteja@usharama.in

Contact > +91-8500419902



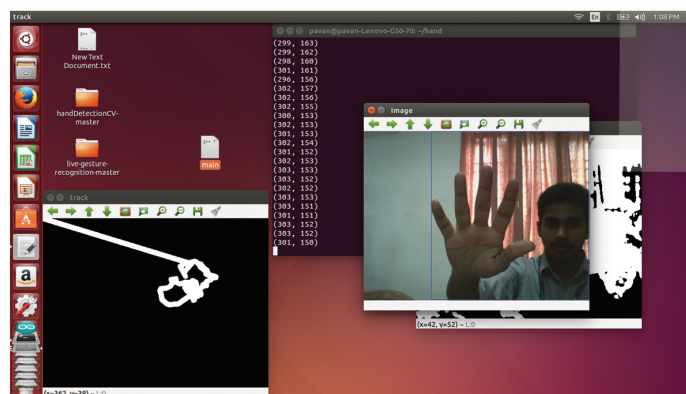
Problem Definition: As the world of technology is changing dynamically on automations, the new way of defining the working feature is also moderated. The feature of interacting with the computer or system components, are still under the ancient methodologies of wiring / haptic technologies. This paper illustrates, with a new way of interacting the system by using gesture management as a moderated approach. As a part of this moderated journey, OpenCV is considered as the programming interface with webcam as a communicator between the user and the logic.

Environment : openCV,LINUX,C++, cvblob

Design :



Output:



For more details:

Team Name > team electrolinus

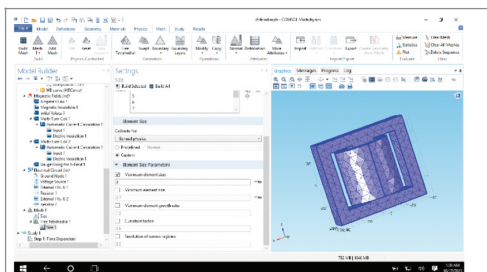
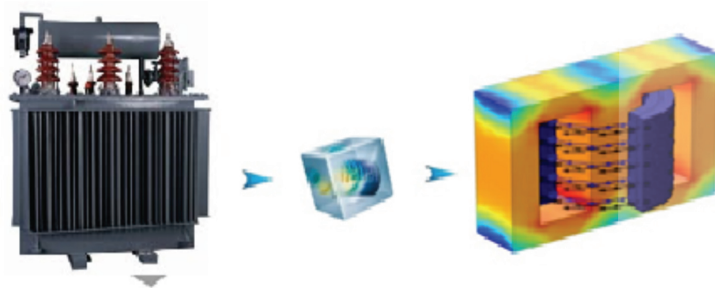
Email > yasarwini@usharama.in

Contact > 9581139462

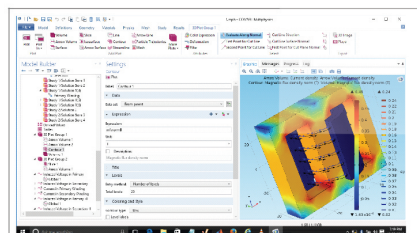
pecial
TEAM

Problem Definition: On the world of Electrical engineering is considered, the new moderated way of analyzing or understanding the core, needs more solved equations merged. To build or construct the core components needs the depth in mathematical knowledge which leads to lot of development cost and funning. To analyze these models the electrical market has an interface tool called COMSOL with built in physics as functionalities helps the engineer to develop and deploy the customized analysis. This paper

Environment :COMSOL(Electrical Circuits, Mag-Design :



Input: A 3D module of E-core transformer



Output: Analysis of E-core transformer in COMSOL Environment

For more details:

Team Name >Energizers

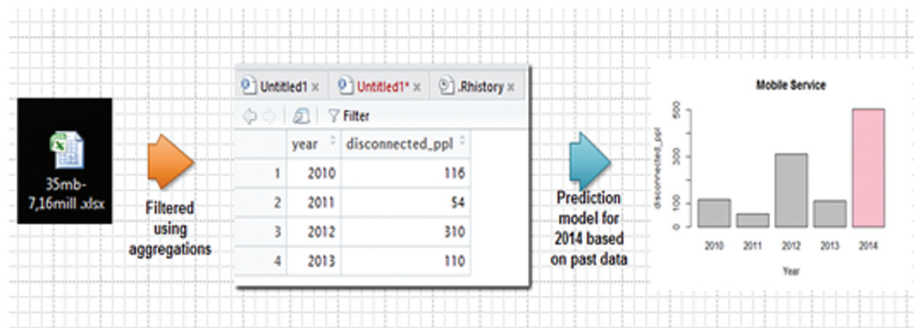
Email > azeez@usharama.in

Contact >+918500277485

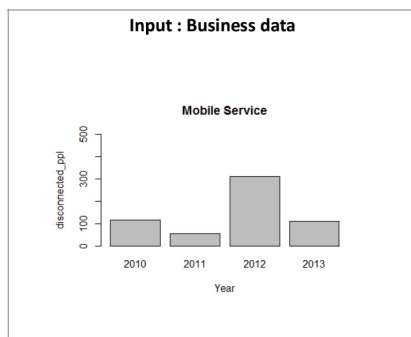
Problem Definition: In the world of technology, with terabytes of data at hand, every business is trying to figure out the best way to understand information about their customers and themselves. But simply using Excel pivot tables to analyze such quantities of information is absurd; so many companies use the statistical programming language to analyze business. R provides a wide variety of statistical and graphical techniques, and is highly extensible useful for business data. Here, the data which need to be surveyed & analyzed is the mobile data, & the challenge is to develop the prediction model & the problem for the business users.

Environment: RStudio(Windows), R-3.2.2 version, simple linear regression, slope intercept form

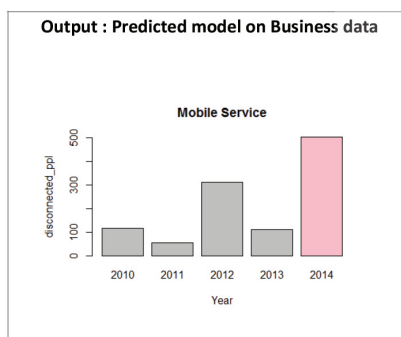
Design :



Input : Business data



Output : Predicted model on Business data



For more details:

Team Name > STATAcon's

Email > arshia@usharama.in

Contact > +91-8985832269

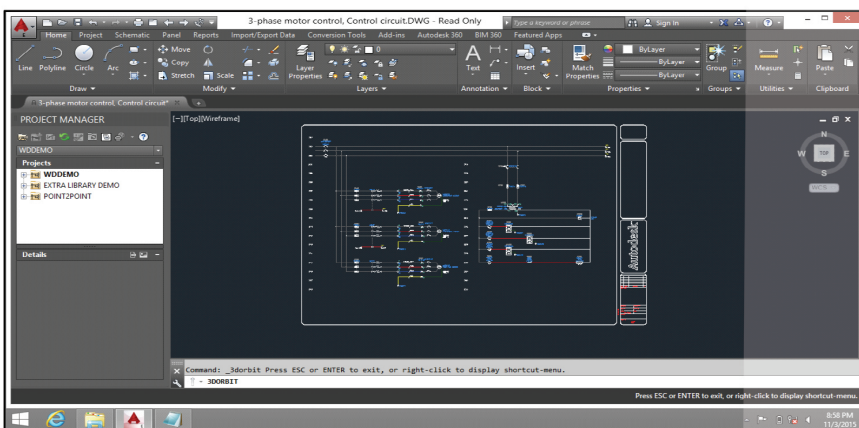
We are “The Energizers”



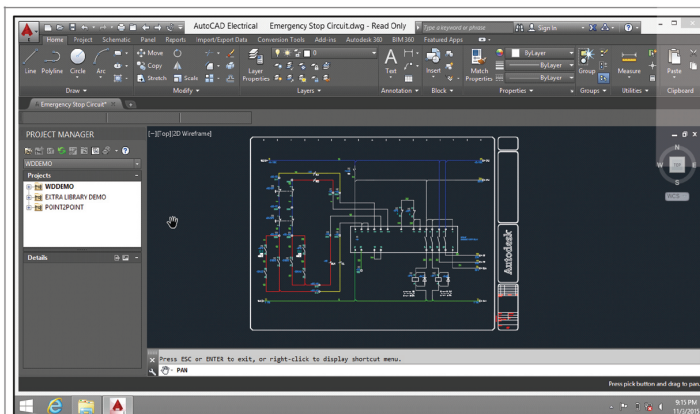
Problem Definition: Modern day control engineering is a relatively new field of study that gained significant attention during the 20th century with the advancement of technology. To understand the mathematical modeling and designing a physical system with control theory needs a good establishment of fined resources. But, as a way of terminologies is considered an AutoCAD which contributes to the engineer with its built-in comprehensive tools and libraries. This paper illustrates, the circuit design for a Emergency Stopping Circuit, Three phase motor com using AutoCAD

Environment : AutoCAD electrical 2015

Design :



Output:



For more details:

Team Name >Energizers

Email > azeez@usharama.in

Contact >+918500277485

**We are “The Solutionators” “The TechnoFoulders”
“The Searchonerds”**



**We are “The Statacoins” “The Assassains”
“The Cvians” “The Electrolinus”**



SpecialTeam 2k15



The Legacy Continues..


SpecialTeam 2k15



Name	Role	Company	Remark
Suvarna (IT)	Jr. Mongodb DBA	Aadhya Analytics	Expecting a role
Sai Kiriti (IT)	Jr. Mongodb DBA	Aadhya Analytics	--
Dilip (ECM)	Hadoop Trainee	Aadhya Analytics	
Jameer (ECM)	Hadoop Trainee	Aadhya Analytics	
Jayasree (CSE)	Hadoop Trainee	Aadhya Analytics	
Vanaja (CSE)	Hadoop Trainee	Aadhya Analytics	
Ajmal (CSE)	Hadoop Trainee	Winbold	
Girish (CSE)	Data Science Tester	Motivity labs	Not Joined Offer relea
Naveen (CSE)	Automation Tester	Virtusa	Joined on : Aug'15
Naga Mounika (CSE)	Jr. Data scientist	BWDC	Joined on : Aug'15
Viswakanth (IT)	Jr. Web Developer	BWDC	Joined on : Aug'15
axman Naga Kiran (EEE)	Lead Tester	BWDC	Joined on : Aug'15
Phani Bhushan (ECM)	SQL operations	XDD	Joined on : Aug'15

In-waiters of Special team

Name	Strengths / weakness	Remarks
Akhil (IT)	--	Left from the team
Rishitha (IT)	Good in Technicality & comm. skills	Not Interested
Chaithanya (IT)	Good in Technicality & comm. skills	Genuine waiter
Garghavi (CSE)	Good in Technicality. But poor in comm. skills	--
Kavya (CSE)	Good in Technicality. But poor in comm. skills	--
Rajeswari (CSE)	Good in Technicality. But poor in comm. skills	--
Prakash (CSE)	Engineering Incomplete	--
Naga Surya (CSE)	Good in Technicality. But poor in comm. skills	Genuine waiter
Varun	AVG in technicality and very poor in comm. skills	--

The background of the entire page is a light blue network diagram. It consists of numerous circular nodes, each containing a stylized icon of a person. These nodes are interconnected by thin, light blue lines, creating a web-like structure that fills the entire frame. The nodes are of varying sizes, and the lines connect them in a non-uniform, organic pattern.

“We Create Future and it remains as”

“The History Of Usharama”

